

Boosting the Local Care Workforce Program



Boosting
the Local Care
Workforce Program

We acknowledge Aboriginal and Torres Strait Islander people as the first peoples of Australia and Traditional Custodians of this land and its waters.

We pay our respects to Elders, knowledge holders and leaders both past and present.

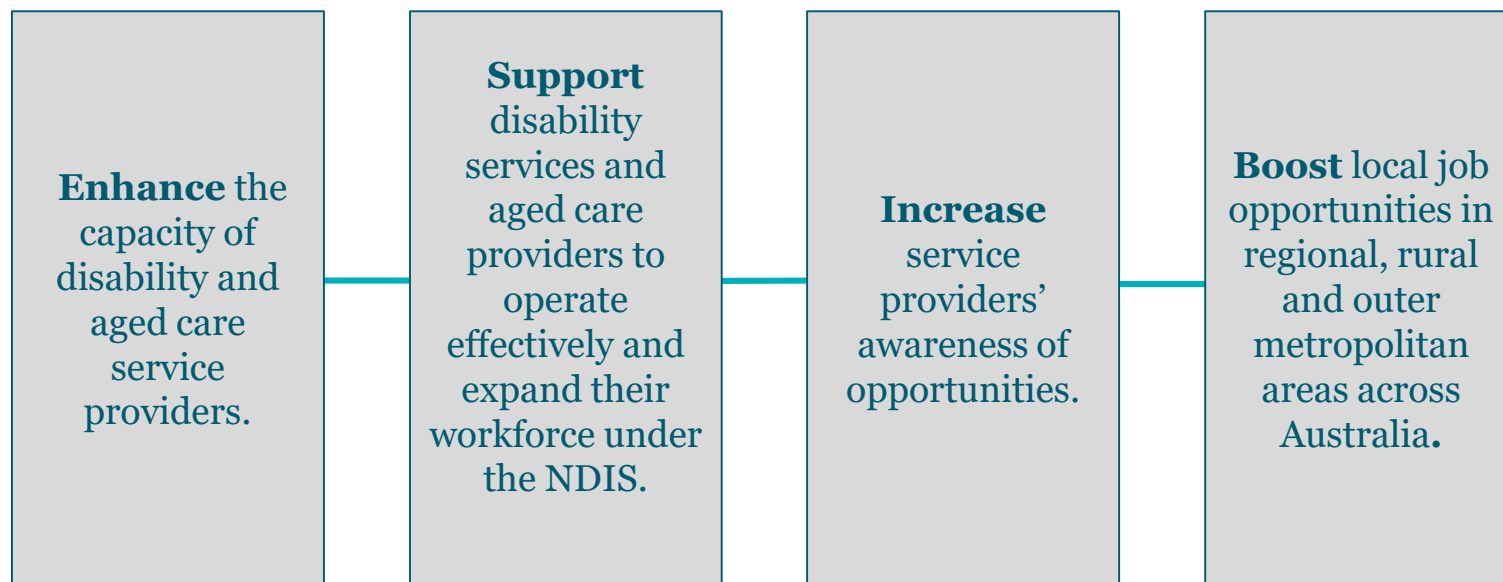
BLCW Program overview

Boosting the Local Care Workforce Program

The National Disability Insurance Scheme (NDIS) is a \$22 billion opportunity to support 460,000 people to achieve their goals.

The Boosting the Local Care Workforce (BLCW) Program has been established to support providers to realise those opportunities and establish an effective market for disability services nationally.

The BLCW Program aims to:



BLCW Program initiatives

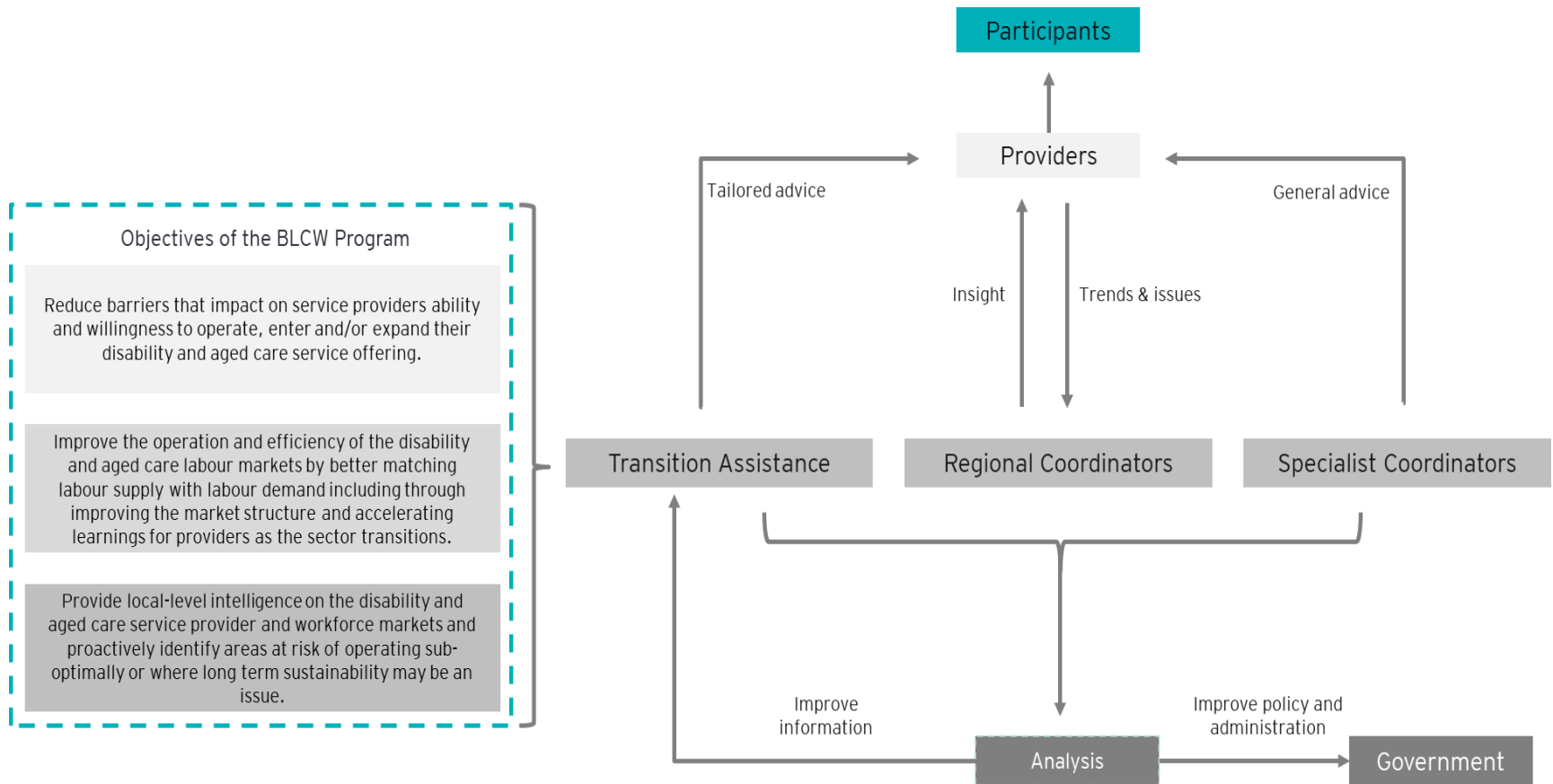
These aims are being achieved through three key initiatives which include a national network of Regional and Specialist Coordinators, and Transition Assistance Funding available to eligible service providers.

These initiatives are supported by the BLCW Program website, including the NDIS Demand Map and Readiness Assessment Tool.



BLCW Program initiatives

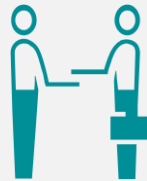
Through these initiatives, the BLCW Program will provide valuable insights and analysis back to the Australian Government to inform policy approaches.



Regional and Specialist Coordinator initiatives

The BLCW Program includes a network of Regional and Specialist Coordinators who will work with service providers and key stakeholders to realise the opportunities available under the NDIS.

25 Regional Coordinators



8 Specialist Coordinators



Regional Coordinator initiative

Regional Coordinators are currently located in 23 locations across Australia and work with service providers and key stakeholders in their geographic area to:

- Identify issues in the local market and report to government on opportunities to shape policy approaches and ongoing BLCW Program activities
- Assist providers to complete a Readiness Assessment via the BLCW Program website (*but are not able to assist organisations to complete an application for Transition Assistance Funding*)
- Identify opportunities for collaboration and localised support including facilitating workshops to engage providers and stakeholders on local market issues
- Raise awareness of available information, resources, and grants programs, including connecting stakeholders with complementary programs and initiatives in the disability and aged care sector



Specialist Coordinator initiative

Specialist Coordinators focus on a sector focus area, develop useful tools and resources for the sector, and inform government of any issues and opportunities for policy development. Some of their activities are outlined below.

Focus Areas	Activities
High Support Needs	Focus on NDIS providers that assist high support needs clients
Disability and Aged Care Collaboration	Focus on opportunities for disability and aged care collaboration including recruitment and providing increased hours of work and prospective career paths
Remote areas	Support market development in remote areas, especially through leveraging the network of Regional Coordinators and connecting with other regional and remote programs or service delivery models
Indigenous providers	Encourage more Aboriginal and Torres Strait Islander owned organisations to register as NDIS or aged care providers, and adding to the business skills of NDIS, health and aged care specialist Indigenous services
Self management	Focus on self-managing NDIS participants who are not fully utilising their supports or are having difficulty engaging providers
Allied Health	Focus on accessing allied health providers of value to NDIS and aged care and self-employed professionals/positive behaviour support practitioners
Financial management	Engage with financial intermediaries and focus on issues related to Specialist Disability Accommodation providers and developers
Workforce planning	Identify available workforce resources and funding for training and recruitment and promote these within the network of Coordinators and BLCW Program website.

Transition Assistance Funding

Eligible disability service providers can apply for **Transition Assistance Funding** up to \$20,000 (excluding GST) to purchase individualised support including business advice and professional services. **Applications for the second round are now open – closing 8 November.**

3



Transition Assistance Funding

Business advice



Professional services



BLCW website

The BLCW website is available at- <https://blcw.dss.gov.au>

Service providers and organisations can utilise the BLCW website to:

Explore

- Understand NDIS demand, via the NDIS Demand Map including workforce demand
- Assess your readiness to become a registered NDIS provider or expand your services
- Find a Regional Coordinator in your area
- Learn about events near you

Start

- Learn about registering to deliver NDIS services
- Learn about quality and safeguards and the role of the NDIS Quality and Safeguards Commission

Grow

- Access tools and resources to grow and sustain your business and workforce
- Learn more about the Transition Assistance Funding

BLCW website

Examples of articles found on the BLCW website to explore opportunities and case studies in the NDIS



School-based traineeships to meet demand for workers.

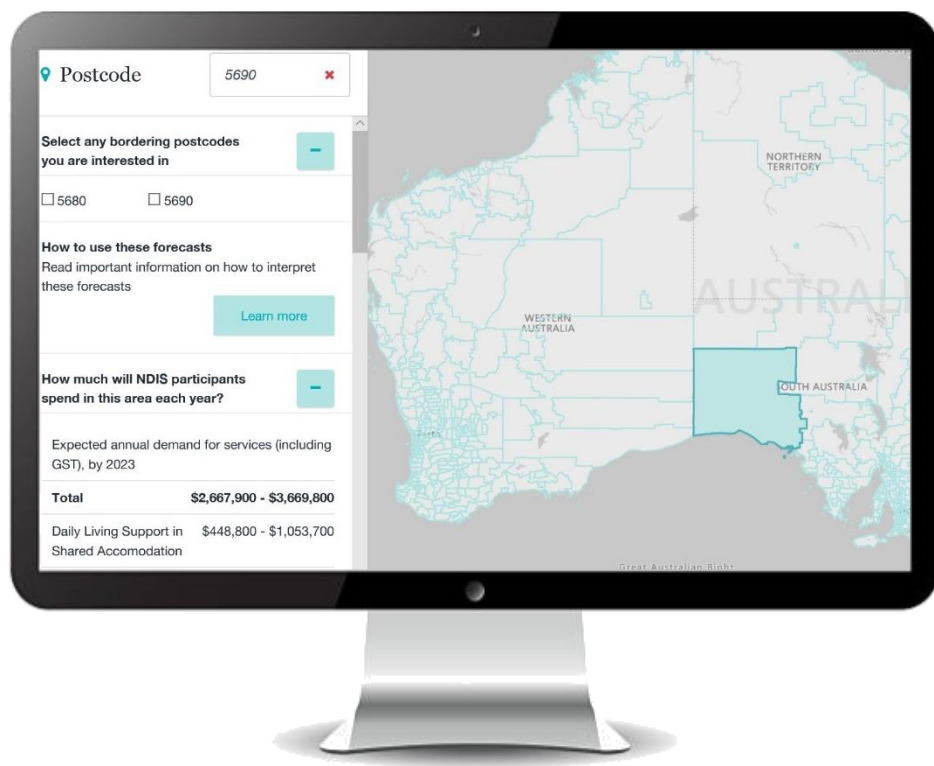
Case study of using local schools to create feeder hubs for pathways into employment.
<https://blcw.dss.gov.au/articles/school-based-traineeships/>



Cooperatives and mutuals

The story of The Co-operative Life, a pioneering Sydney-based aged care co-operative also flourishing as NDIS provider in rural NSW.
<https://blcw.dss.gov.au/articles/case-study-aged-care-the-co-operative-life/>

Understanding NDIS demand



The NDIS Demand Map provides users with an interactive and free tool to determine demand for NDIS services across Australia, based on postcode entry. The NDIS Demand Map was recently updated to include both forecasted data and current demand data.

Providers can use the map to find out:

- How many NDIS participants are expected to live in a postcode
- How much participants are expected to spend, and on what types of support
- How many workers may be required to meet participant needs and preferences

Access the Demand Map at:

<https://blcw.dss.gov.au/demandmap/>

BLCW Program achievements to date

(Figures as at 30 September)



3,753
organisations
engaged
so far



3,042
Readiness
Assessments
have been
completed.



208
events attended
91
events hosted
or co-hosted



\$5,567,500
Transition
Assistance
Funding
allocated in
Round 1



22,504
website users
131,847
page views of the
BLCW website

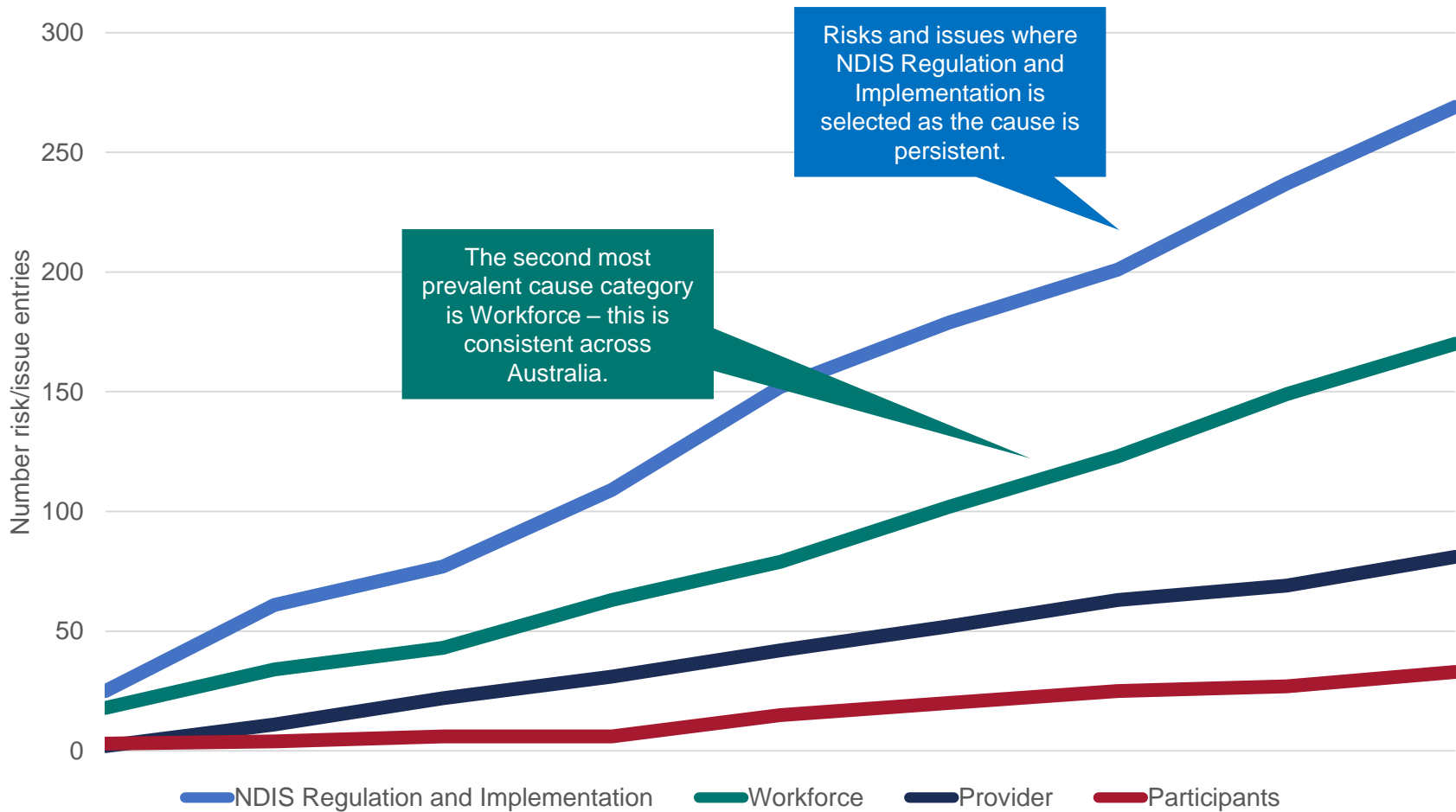


731
risks and issues
captured so far

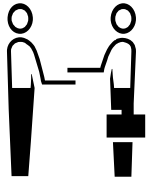
Risks and issues captured to date

When data on risks and issues facing the industry are collected, a “cause category” is selected. These are shown below based on how frequently they occur, over time.

(Figures as at 30 September)



How do BLCW Coordinators work with providers to address market and workforce challenges?



Help providers to understand their Readiness Plans, and connect them to supports related to workforce, people and capability



Promote existing workforce programs or initiatives and available funding including the Transition Assistance Funding, and the Jobs and Market Fund



Gather intelligence on what's working and not working, to make employment and training programs work for the NDIS, including jobactive, DES and CDP



Bring providers together to develop local action plans on workforce and share good practice case studies on alternate workforce models, including shared workforce pools or cooperatives

Thank you

